

JOB \_\_\_\_\_ ITEM # \_\_\_\_\_ QTY # \_\_\_\_\_



### HEATED, BUILT-IN TYPE

H-AC  
CAPACITY-Up to 175 cups.

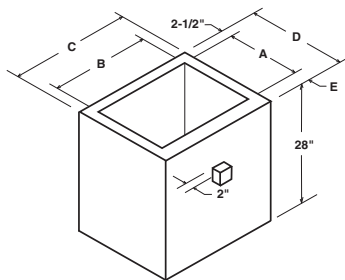
### SPECIFICATIONS

Model H-AC built-in heated cup dispenser.

**FRAME AND BODY:** The frame is constructed of all welded heavy gauge stainless steel. Body is insulated with 1" fiberglass and both interior and exterior are sheathed in 18 ga. zinc coated steel.

**DISPENSER:** The unit is fitted with a model ADIF adjustable drop-in cup dispenser (see catalog page D-14 for specifications).

**HEATING SYSTEM:** The heating system consists of heating elements of 1500 watt total capacity, thermostatically regulated and wired for 120 or 208 volt (as specified) single phase power supply. These are wired to an external junction box for convenient electrical connection.



VOLTAGE SINGLE PH.	TOTAL WATTAGE	AMPS
120	1500	12.5
208	1500	7.2

RACK SIZE	COUNTER CUTOUT		CHASSIS DIMENSIONS		
	A	B	C	D	E
10 x 20	13	23	28	20	3-1/2
14 x 20	17	23	28	24	3-1/2
20 x 20	23	23	28	29	3

HEIGHT 28" - Other heights available.  
Shipping weight-200

**LIMITED WARRANTY:** PIPER PRODUCTS warrants to the original purchaser parts and labor for a period of twelve (12) months from the date of purchase. See manufacturer's complete warranty for details.

It is our policy to build equipment which is design certified by companies that have been accredited at the Federal Level by the Occupational Safety and Health Agency (OSHA) and ANSI as a National Recognized Testing Laboratory. These companies include CSA International, Underwriters Laboratories, and the National Sanitation Foundation. However, a continuing program of product improvement makes it necessary to submit new models to the agencies as they are developed. Consequently, all models may not bear the appropriate labels at all times.

We reserve the right to change specifications and product design without notice. Such revisions do not entitle buyer to corresponding changes, improvements, additions or replacements for previously purchased equipment. Information is not for design purposes.



### HEATED, BUILT-IN TYPE

H-ACS  
CAPACITY-Up to 175 cups, approx.  
100 to 144 saucers.

### SPECIFICATIONS

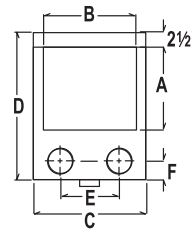
Model H-ACS built-in heated cup and saucer dispenser.

**FRAME AND BODY:** The frame is constructed of all welded heavy gauge stainless steel. Body is insulated with 1" fiberglass and both interior and exterior are sheathed in 18 ga. zinc coated steel.

**CUP DISPENSER:** The unit is fitted with a model ADIF adjustable drop-in cup dispenser (see catalog page -14 for specifications).

**SAUCER DISPENSERS:** The unit includes two Model AT adjustable, drop in saucer dispensers. (See Page - for specifications.) Saucer dia. required when ordering. Max.6-5/8"

**HEATING SYSTEM:** The heating system consists of heating elements of 1500 watt total capacity, thermostatically regulated and wired for 120 or 208 volt (as specified) single phase power supply. These are wired to an external junction box for convenient electrical connection.



VOLTAGE SINGLE PH.	TOTAL WATTAGE	AMPS
120	1500	12.5
208	1500	7.2

RACK SIZE	COUNTER CUTOUT		CHASSIS DIMENSIONS		TUBE LOCATION	
	A	B	C	D	E	F
10 x 20	13	23	28	30-1/4	12-1/2	6-3/4
14 x 20	17	23	28	34-1/4	12-1/2	6-3/4
20 x 20	23	23	28	39-1/4	12-1/2	6-3/4

HEIGHT-28" - Other heights available. Dish guides add 4" to height.  
Shipping weight-225

**SPEC E-28**

**PIPER PRODUCTS**  
BUILT TO LAST  
[www.piperonline.net](http://www.piperonline.net)

300 S. 84th Avenue  
Wausau, WI 54401  
Phone: 800-544-3057  
Fax: 715-842-3125